

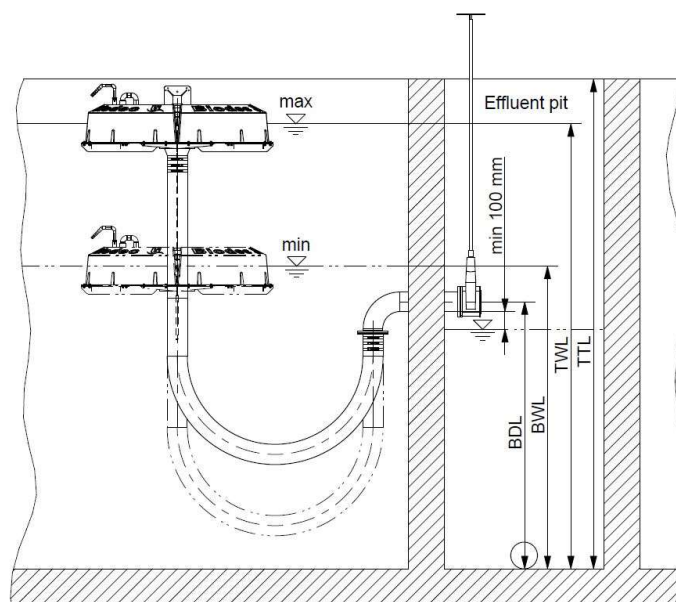
## BIODEC™ INQUIRY SHEET

### Required information for BIODEC™ Decanter selection

Project Details		
Project Name		
Location (Country, City)		
Daily hydraulic load [m <sup>3</sup> /day]		
Number of separate lines		
Number of Cycles/day		
Decant time/Cycle [h]		
Number of decanters/line		
Accepted material of construction for decanters	<input type="checkbox"/> HDPE;	<input type="checkbox"/> Stainless Steel; quality: _____
Project type	<input type="checkbox"/> Communal	<input type="checkbox"/> Industrial
Incoming flow to the basins during decanting (if applicable) [m <sup>3</sup> /h]		

Tank Dimensions								
Shape	Diameter [m]	Length [m]	Width [m]	TTL [m]	TWL [m]	BWL [m]	BDL [m]	Discharge pipe nominal diameter [mm]
<input type="checkbox"/> Rectangular								
<input type="checkbox"/> Circular								

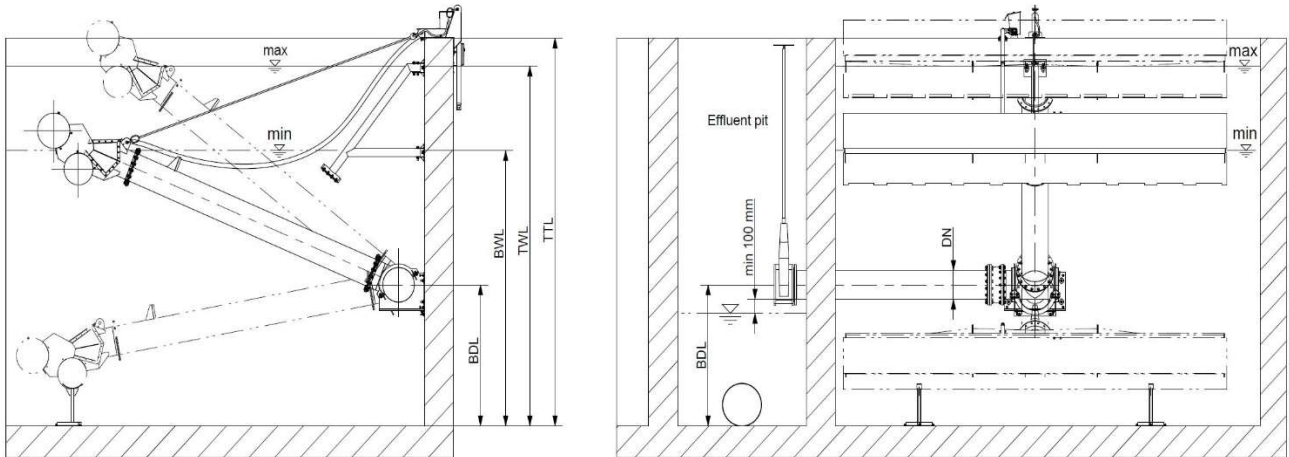
### Biodec S 100-150-200, C



#### Notes:

- TTL stands for 'Tank Top Level' – including freeboard
- TWL stands for 'Top Water Level'
- BWL stands for 'Bottom Water Level'
- BDL stands for 'Bottom Discharge Level'
- Please observe the below limitations:
  - o  $TWL - BDL < 3.0 \text{ m}$
  - o  $BWL - BDL > 0.5 \text{ m}$
  - o Effluent free flow is required, application of 'Effluent pit' is recommended
- If any of the above non-optional brackets are empty, optimal configuration will be assumed.

Biodec S 300-400-500-600



**Notes:**

- Please observe the below limitations:
  - $TWL - BDL < 2,5 \text{ m}$
  - $TTL - BDL < 3 \text{ m}$
  - Effluent free flow is required, application of 'Effluent pit' is recommended